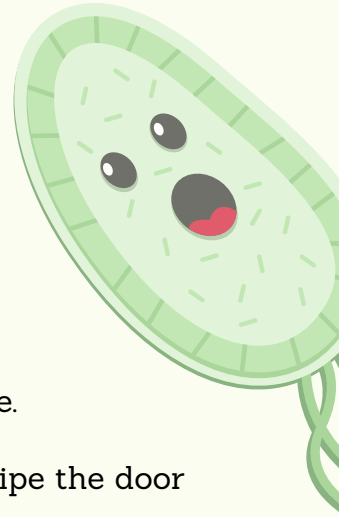
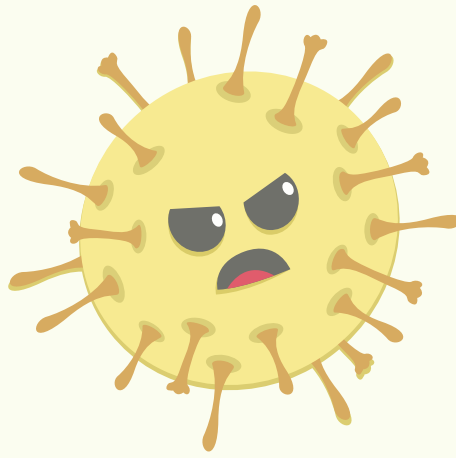
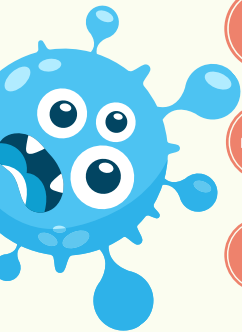


# GLASS SHOWER DOORS



- 1 Use a shower squeegee to clean the glass doors after each use.
- 2 To avoid soap deposits or lime buildup in hard water areas, wipe the door dry after each use.
- 3 Wipe the doors with a mild detergent diluted in water to keep the door looking new.
- 4 Never use hard bristle brushes, abrasive sponges or sharp instruments on the glass panels or framing.
- 5 Never use cleaners containing abrasives, ammonia, bleach, acids, waxes, alcohol or solvents as they may damage the finish. Do Not let cleaners soak on surfaces for an extended period as doing so may discolor or mar the finish.
- 6 Rinse and wipe fixtures after cleaning to prevent soap buildup and water spots.
- 7 Keep shower doors open so that air can circulate and dry out the enclosure

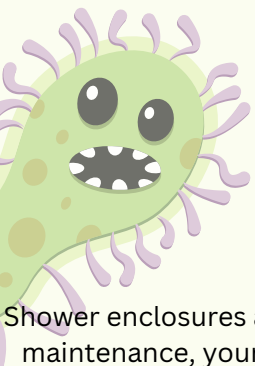


## APPROVED PRODUCTS:

- Spray Away Glass Cleaner
- Lysol Bathroom Cleaner
- Scrubbing Bubbles
- 7th Generation, Method Brand

## AVOID THESE PRODUCTS:

- Harsh chemical cleaners
- Abrasive or polishes including water spot removers, toothpaste, wax or oil, petroleum based cleaners, rough cleaners with gritty additives
- Acid or Alkalis that you would not want in contact with your skin for extended period of time



Shower enclosures are made with tempered safety glass, the finest aluminum, and high quality hardware. With proper care and maintenance, your shower door enclosure will provide you with many years of use. Customer's are discouraged to use harsh and abrasive cleaners on any part of your shower as doing so may damage the metal or glass on your enclosure.